



218 & 220-226 East 117th Street

New York, NY

For more information, please contact:

Anthony Gagliano
(917) 446-4400

ag@safeguardrealty.com

Rudolph Demasi
(914) 391-1949

rdemasi@safeguardrealty.com



All information regarding property for lease is deemed from source reliable. However, no representation is made as to the accuracy thereof and it is subject to errors, omissions, changes of price, rental or other conditions, lease or financing, or withdrawal without notice.

Total of 25,000 Sq. Ft.

Available For Lease

- Entire 22,500 SF Building plus 2,500 SF Adjacent Parking Lot.
- Many Legal Uses Permitted including: Retail, Office, Medical, School, Fitness, Non-profit, Housing, Automotive, Parking, Etc.
- Ground Level 7,500 SF with 15' Ceiling Height and drive-in access and legal curb-cut.
- Second Level 7,500 SF with 15' Ceiling
- Basement Level 7,500 SF with 12.5' Ceiling Height
- Drive-in Elevator Services Basement, Ground & Second Floors with second legal curb-cut.
- Adjacent Parking Lot has 3rd legal curb cut allowing for parking and enforceable tow away zone.
- Between Second & Third Avenues
- Near 6 Train Station at 116th Street and site of future Q Train Expansion
- Possession Arranged
- Price Upon Request



218 & 220-226 East 117th Street

New York, NY

For more information, please contact:

Anthony Gagliano
(917) 446-4400
ag@safeguardrealty.com

Rudolph Demasi
(914) 391-1949
rdemasi@safeguardrealty.com



All information regarding property for lease is deemed from source reliable. However, no representation is made as to the accuracy thereof and it is subject to errors, omissions, changes of price, rental or other conditions, lease or financing, or withdrawal without notice.



218 & 220-226 East 117th Street

New York, NY

For more information, please contact:

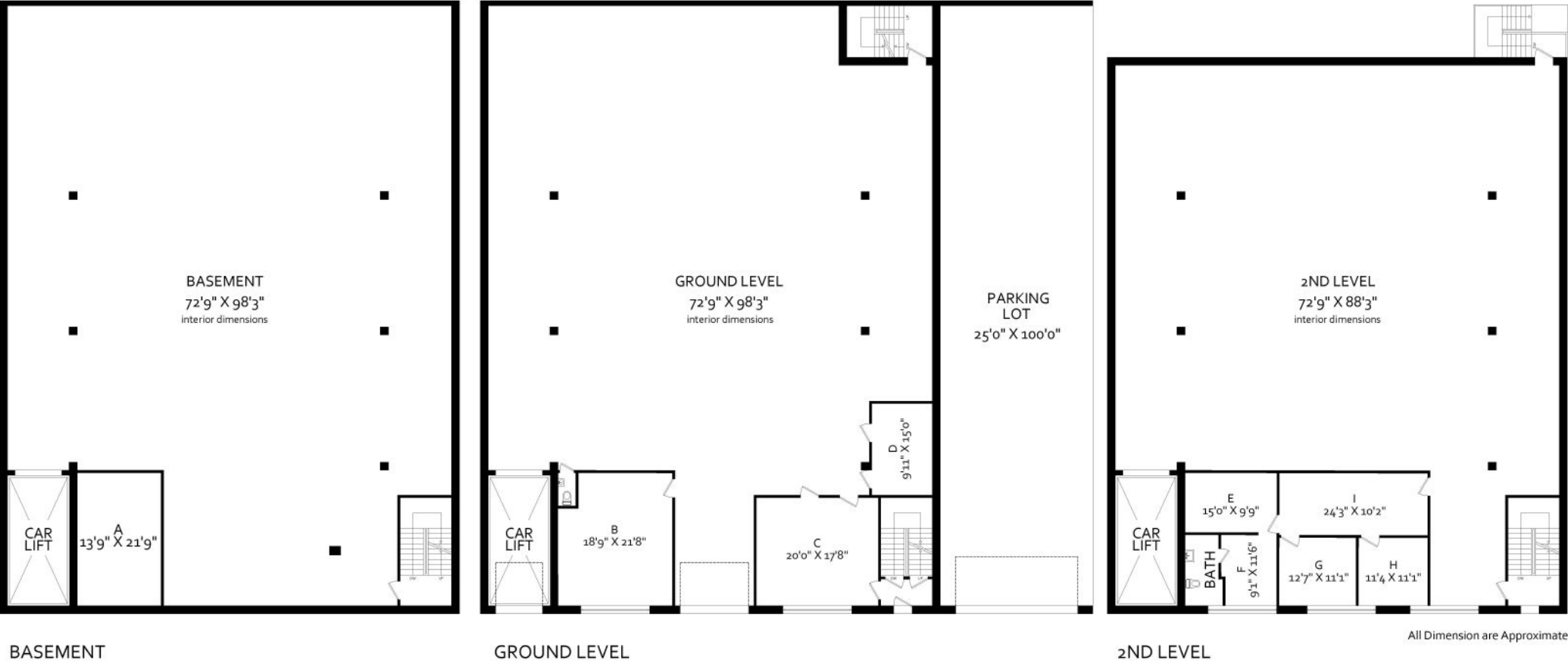
Anthony Gagliano
(917) 446-4400
ag@safeguardrealty.com

Rudolph Demasi
(914) 391-1949
rdemasi@safeguardrealty.com



All information regarding property for lease is deemed from source reliable. However, no representation is made as to the accuracy thereof and it is subject to errors, omissions, changes of price, rental or other conditions, lease or financing, or withdrawal without notice.

220-226 East 117th Street



218 & 220-226 East 117th Street

New York, NY

For more information, please contact:

Anthony Gagliano (917) 446-4400 ag@safeguardrealty.com	Rudolph Demasi (914) 391-1949 rdemasi@safeguardrealty.com
--	---



All information regarding property for lease is deemed from source reliable. However, no representation is made as to the accuracy thereof and it is subject to errors, omissions, changes of price, rental or other conditions, lease or financing, or withdrawal without notice.