

# 171 EAST 122ND STREET NEW YORK, NY

OFFICE/GROUND LEVEL/  
DRIVE-IN SPACE  
**FOR LEASE**

LEARN MORE



## 2,000 SF GROUND LEVEL AVAILABLE



CONTACT US

**ANTHONY GAGLIANO**  
(917) 446-4400

[ANTHONY@SRPBROKERS.COM](mailto:ANTHONY@SRPBROKERS.COM)

**RUDOLPH DEMASI**  
(914) 391-1949

[RUDY@SRPBROKERS.COM](mailto:RUDY@SRPBROKERS.COM)

**PAUL MCVEIGH**  
(646) 339-7890

[PAUL@SRPBROKERS.COM](mailto:PAUL@SRPBROKERS.COM)

THE INFORMATION CONTAINED HEREIN HAS BEEN OBTAINED FROM SOURCES BELIEVED TO BE RELIABLE BUT IS NOT GUARANTEED. STRATEGIC REALTY PARTNERS AND ITS AGENTS MAKE NO REPRESENTATIONS OR WARRANTIES, EXPRESS OR IMPLIED, AS TO THE ACCURACY, COMPLETENESS, OR SUITABILITY OF THE INFORMATION. ALL INTERESTED PARTIES ARE RESPONSIBLE FOR CONDUCTING THEIR OWN INDEPENDENT INVESTIGATION AND VERIFICATION OF ALL DATA, INCLUDING BUT NOT LIMITED TO SQUARE FOOTAGE, ZONING, LAND USE, AND FINANCIAL PROJECTIONS. THIS OFFERING IS SUBJECT TO ERRORS, OMISSIONS, PRIOR SALE OR LEASE, CHANGE IN PRICE OR TERMS, AND WITHDRAWAL WITHOUT NOTICE.

# PRIME EAST HARLEM LOCATION

- 2,000 SF Ground Level Space
- Flexible Uses Include Retail, Office, Drive-in Storage
- Well Equipped Ground Level Space
- 3 Private Offices, Private Restroom and Full Pantry
- 24/7 Access
- 24/7 Tenant-Controlled HVAC Including Heat
- Lighting, Electric and Low Voltage Distributed Throughout
- Legal Curb Cut in Place Permitting Drive-In Use and Enforceable "No Parking" Zone in Front of Building
- Situated on East 122nd Street Between Third Avenue and Lexington Avenue
- Three Blocks from the 125th St. 4, 5 & 6 Express Station
- Three Blocks from the 125 Street Metro- North
- Three Blocks from RFK (Tri-Boro) Bridge & FDR/Harlem River Drive
- Immediate Possession
- Price Upon Request



**171 EAST 122<sup>ND</sup> ST  
NEW YORK, NY**



STRATEGIC  
REALTY  
PARTNERS

**CONTACT US**

**ANTHONY GAGLIANO**  
(917) 446-4400

**[ANTHONY@SRPBROKERS.COM](mailto:ANTHONY@SRPBROKERS.COM)**

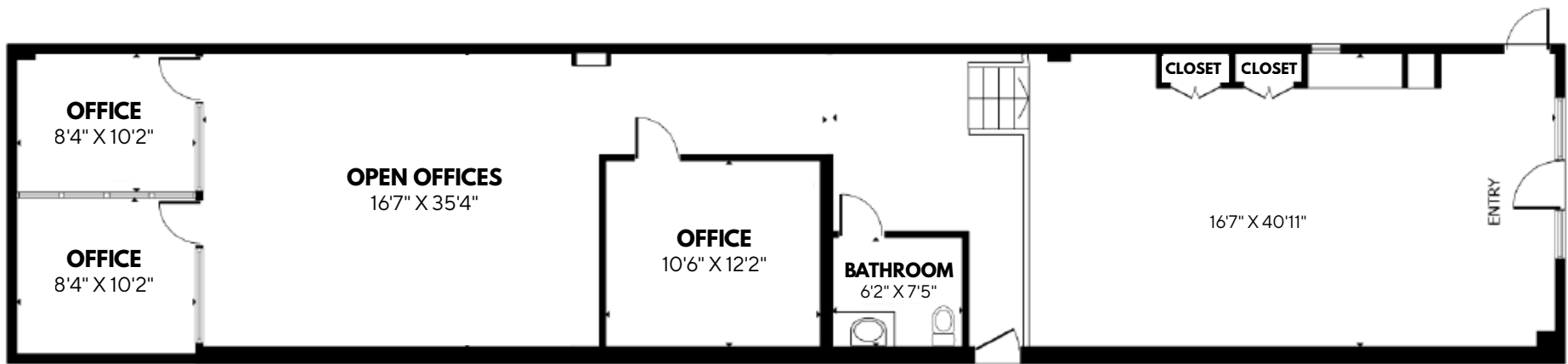
**RUDOLPH DEMASI**  
(914) 391-1949

**[RUDY@SRPBROKERS.COM](mailto:RUDY@SRPBROKERS.COM)**

**PAUL MCVEIGH**  
(646) 339-7890

**[PAUL@SRPBROKERS.COM](mailto:PAUL@SRPBROKERS.COM)**

# 171 EAST 122<sup>ND</sup> STREET FLOOR PLAN



**GROUND LEVEL**

**122ND STREET**

SCAN HERE



 **Matterport**<sup>®</sup>  
**3D VIRTUAL WALKTHROUGH**



**CONTACT US**

**ANTHONY GAGLIANO**  
(917) 446-4400

[ANTHONY@SRPBROKERS.COM](mailto:ANTHONY@SRPBROKERS.COM)

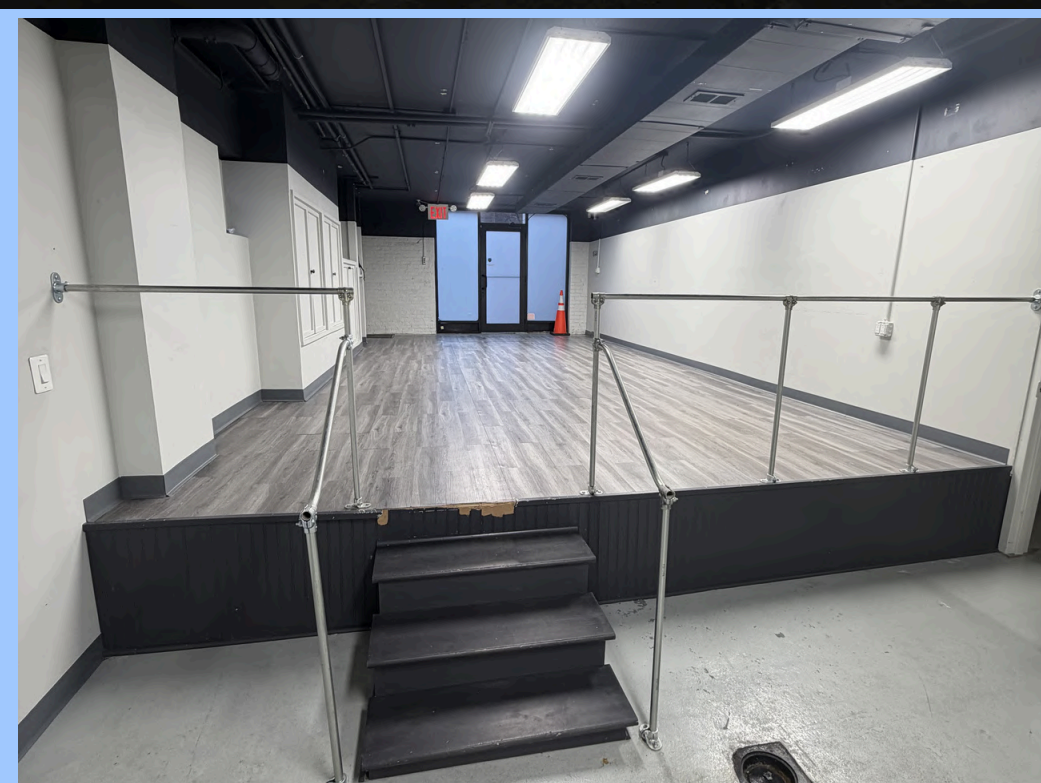
**RUDOLPH DEMASI**  
(914) 391-1949

[RUDY@SRPBROKERS.COM](mailto:RUDY@SRPBROKERS.COM)

**PAUL MCVEIGH**  
(646) 339-7890

[PAUL@SRPBROKERS.COM](mailto:PAUL@SRPBROKERS.COM)

# 171 EAST 122<sup>ND</sup> ST NEW YORK, NY



**CONTACT US**

**ANTHONY GAGLIANO**  
(917) 446-4400

**[ANTHONY@SRPBROKERS.COM](mailto:ANTHONY@SRPBROKERS.COM)**

**RUDOLPH DEMASI**  
(914) 391-1949

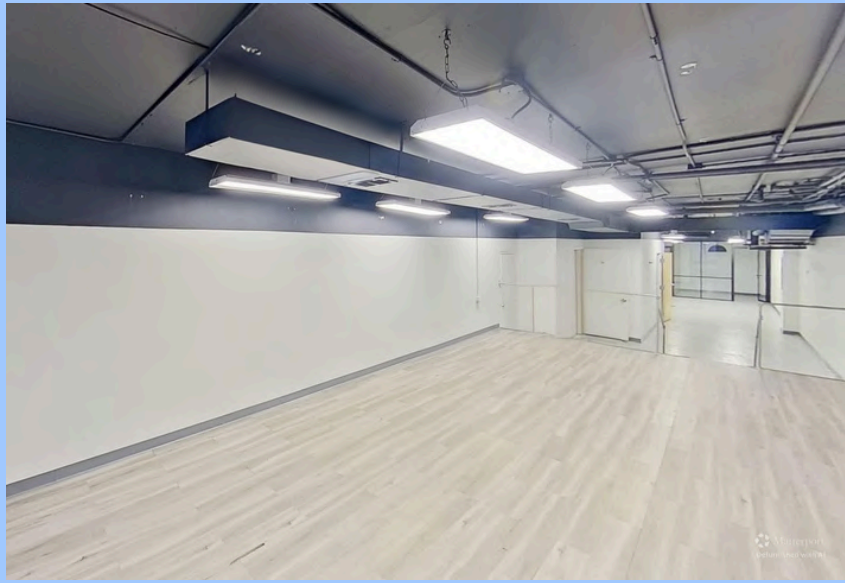
**[RUDY@SRPBROKERS.COM](mailto:RUDY@SRPBROKERS.COM)**

**PAUL MCVEIGH**  
(646) 339-7890

**[PAUL@SRPBROKERS.COM](mailto:PAUL@SRPBROKERS.COM)**

THE INFORMATION CONTAINED HEREIN HAS BEEN OBTAINED FROM SOURCES BELIEVED TO BE RELIABLE BUT IS NOT GUARANTEED. STRATEGIC REALTY PARTNERS AND ITS AGENTS MAKE NO REPRESENTATIONS OR WARRANTIES, EXPRESS OR IMPLIED, AS TO THE ACCURACY, COMPLETENESS, OR SUITABILITY OF THE INFORMATION. ALL INTERESTED PARTIES ARE RESPONSIBLE FOR CONDUCTING THEIR OWN INDEPENDENT INVESTIGATION AND VERIFICATION OF ALL DATA, INCLUDING BUT NOT LIMITED TO SQUARE FOOTAGE, ZONING, LAND USE, AND FINANCIAL PROJECTIONS. THIS OFFERING IS SUBJECT TO ERRORS, OMISSIONS, PRIOR SALE OR LEASE, CHANGE IN PRICE OR TERMS, AND WITHDRAWAL WITHOUT NOTICE.

# 171 EAST 122<sup>ND</sup> STREET NEW YORK, NY



**CONTACT US**

**ANTHONY GAGLIANO**  
(917) 446-4400

**ANTHONY@SRPBROKERS.COM**

**RUDOLPH DEMASI**  
(914) 391-1949

**RUDY@SRPBROKERS.COM**

**PAUL MCVEIGH**  
(646) 339-7890

**PAUL@SRPBROKERS.COM**

THE INFORMATION CONTAINED HEREIN HAS BEEN OBTAINED FROM SOURCES BELIEVED TO BE RELIABLE BUT IS NOT GUARANTEED. STRATEGIC REALTY PARTNERS AND ITS AGENTS MAKE NO REPRESENTATIONS OR WARRANTIES, EXPRESS OR IMPLIED, AS TO THE ACCURACY, COMPLETENESS, OR SUITABILITY OF THE INFORMATION. ALL INTERESTED PARTIES ARE RESPONSIBLE FOR CONDUCTING THEIR OWN INDEPENDENT INVESTIGATION AND VERIFICATION OF ALL DATA, INCLUDING BUT NOT LIMITED TO SQUARE FOOTAGE, ZONING, LAND USE, AND FINANCIAL PROJECTIONS. THIS OFFERING IS SUBJECT TO ERRORS, OMISSIONS, PRIOR SALE OR LEASE, CHANGE IN PRICE OR TERMS, AND WITHDRAWAL WITHOUT NOTICE.