

# 178-182 EAST 124TH STREET

## NEW YORK, NY 10035



Total Of 15,000 SQ FT | 4-Story Elevator Building | Museum-Quality Finishes | Adjacent Parking



**15,000<sup>SQ FT</sup>**  
TOTAL RENTABLE AREA

**4 Story**  
ELEVATOR BUILDING

**2,500<sup>SQ FT</sup>**  
ADJACENT PARKING INCL

### PROPERTY INFORMATION

Address:	178-182 East 124th Street	Ground Floor Ceiling Height:	14 feet
Total Rentable Area:	15,000 SQ FT	Cross Streets:	Between Lexington Avenue & Third Avenue
Interior Rentable Area:	12,500 SQ FT	Neighborhood:	East Harlem
Adjacent Parking:	2,500 SQ FT gated, paved lot	Possession:	Immediate
Floor Plate:	3,125 SQ FT per floor (column-free)	Price:	Upon Request
Building Type:	4-Story Elevator Building		

## AVAILABLE FOR LEASE

**ANTHONY GAGLIANO**  
anthony@srpbrokers.com  
917-446-4400

**RUDOLPH DEMASI**  
rudolph@srpbrokers.com  
914-391-1949

**PAUL MCVEIGH**  
paul@srpbrokers.com  
646-339-7890

LEARN MORE

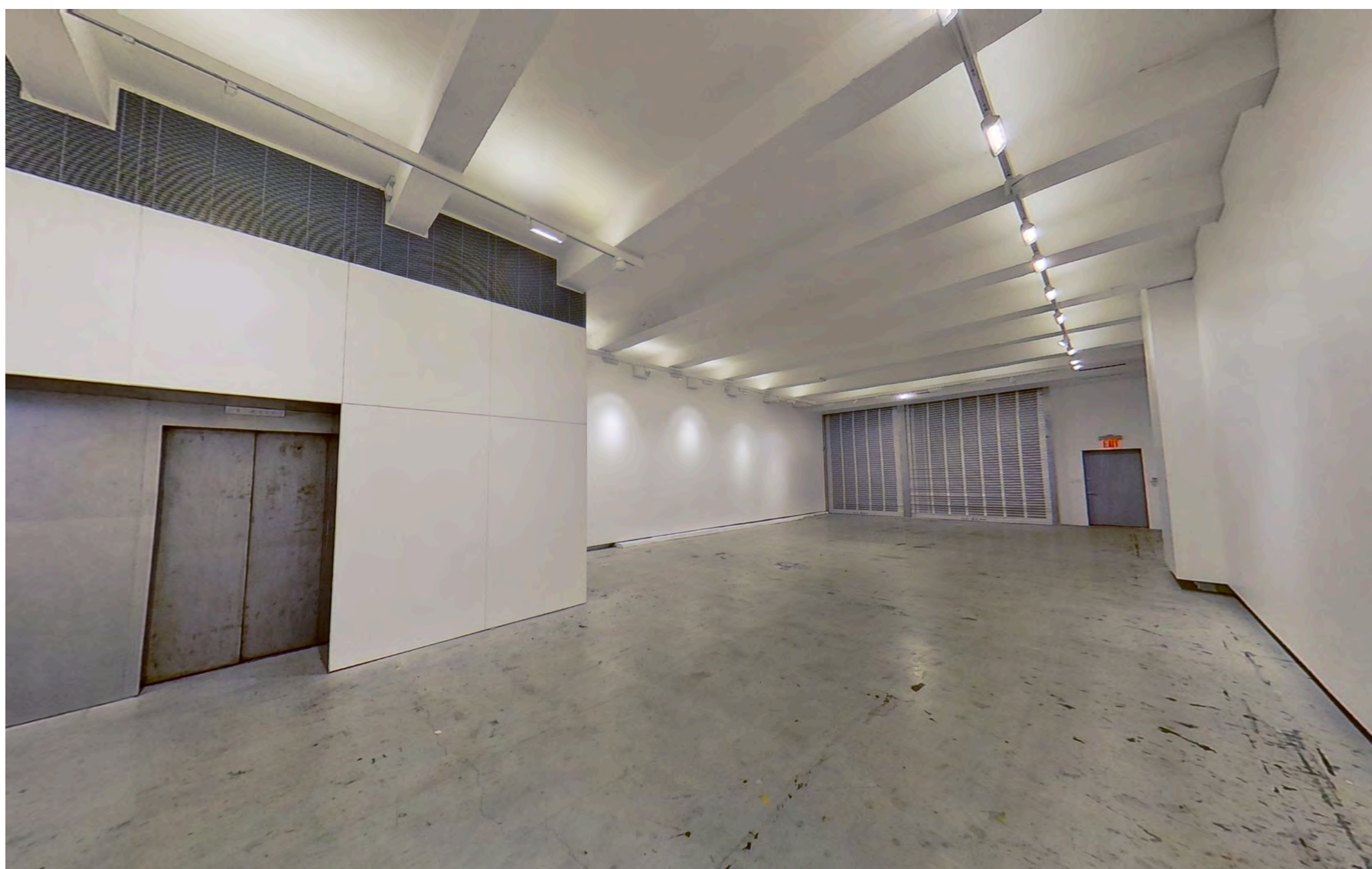


The information contained herein has been obtained from sources believed to be reliable but is not guaranteed. Strategic Realty Partners and its agents make no representations or warranties, express or implied, as to the accuracy, completeness, or suitability of the information. All interested parties are responsible for conducting their own independent investigation and verification of all data, including but not limited to square footage, zoning, land use, and financial projections. This offering is subject to errors, omissions, prior sale or lease, change in price or terms, and withdrawal without notice.



# KEY FEATURES

178-182 EAST 124TH STREET, NEW YORK, NY 10035



## ✓ 12,500 SQ FT of Interior at/above Grade Space

Each floor provides 3,125 square feet of column-free space

## ✓ Four Entire Floors

Ground Level plus three upper floors accessible by passenger / freight elevator

## ✓ Gated 2,500 SQ FT Adjacent Parking Lot

Paved and secure—a rare Manhattan amenity providing 10-12 vehicle capacity

## ✓ Ground Floor: 14-Foot Ceilings

Exquisitely finished ground floor space offering two drive-in overhead doors and access to adjacent parking for flexible vehicle and equipment access

## ✓ Museum-Quality Renovation Throughout

Every detail meticulously executed including:

- State-of-the-art LED lighting systems with track mounting
- Modern HVAC systems with individual floor controls
- ADA-compliant restrooms on multiple floors
- Passenger / freight elevator serving all four floors
- Advanced security systems and entry controls
- Updated electrical infrastructure
- Polished concrete flooring on ground level
- Premium hardwood flooring on upper levels
- Exposed beam ceilings adding architectural interest

## ✓ Prime East Harlem Location

On East 124th Street between Lexington Avenue & Third Avenue, with immediate proximity to 125th Street Station

**4 5 6** trains + **MTA Metro-North Railroad**

## ✓ Immediate Possession Available

Turnkey, move-in ready condition with no additional work required

## ✓ Total Rentable Area: 15,000 SQ FT

12,500 SQ FT interior space + 2,500 SQ FT adjacent parking lot

# AVAILABLE FOR LEASE

**ANTHONY GAGLIANO**

anthony@srpbrokers.com

917-446-4400

**RUDOLPH DEMASI**

rudy@srpbrokers.com

914-391-1949

**PAUL MCVEIGH**

paul@srpbrokers.com

646-339-7890

LEARN MORE



The information contained herein has been obtained from sources believed to be reliable but is not guaranteed. Strategic Realty Partners and its agents make no representations or warranties, express or implied, as to the accuracy, completeness, or suitability of the information. All interested parties are responsible for conducting their own independent investigation and verification of all data, including but not limited to square footage, zoning, land use, and financial projections. This offering is subject to errors, omissions, prior sale or lease, change in price or terms, and withdrawal without notice.

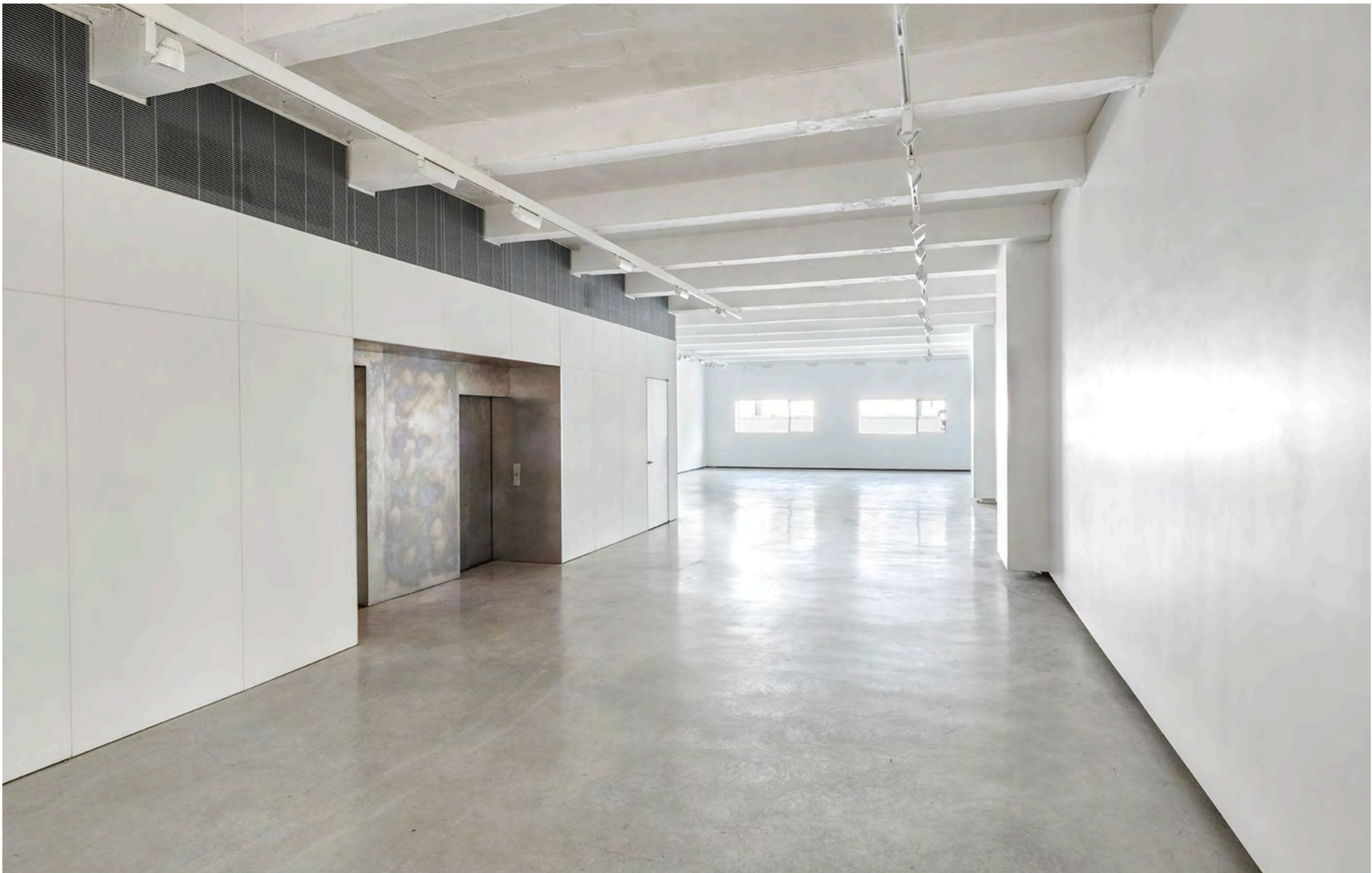


# PROPERTY GALLERY



178-182 EAST 124TH STREET, NEW YORK, NY 10035

OFFICE, ELEVATOR & PARKING



LOCATION



## AVAILABLE FOR LEASE

**ANTHONY GAGLIANO**  
anthony@srpbrokers.com  
917-446-4400

**RUDOLPH DEMASI**  
rudy@srpbrokers.com  
914-391-1949

**PAUL MCVEIGH**  
paul@srpbrokers.com  
646-339-7890

LEARN MORE



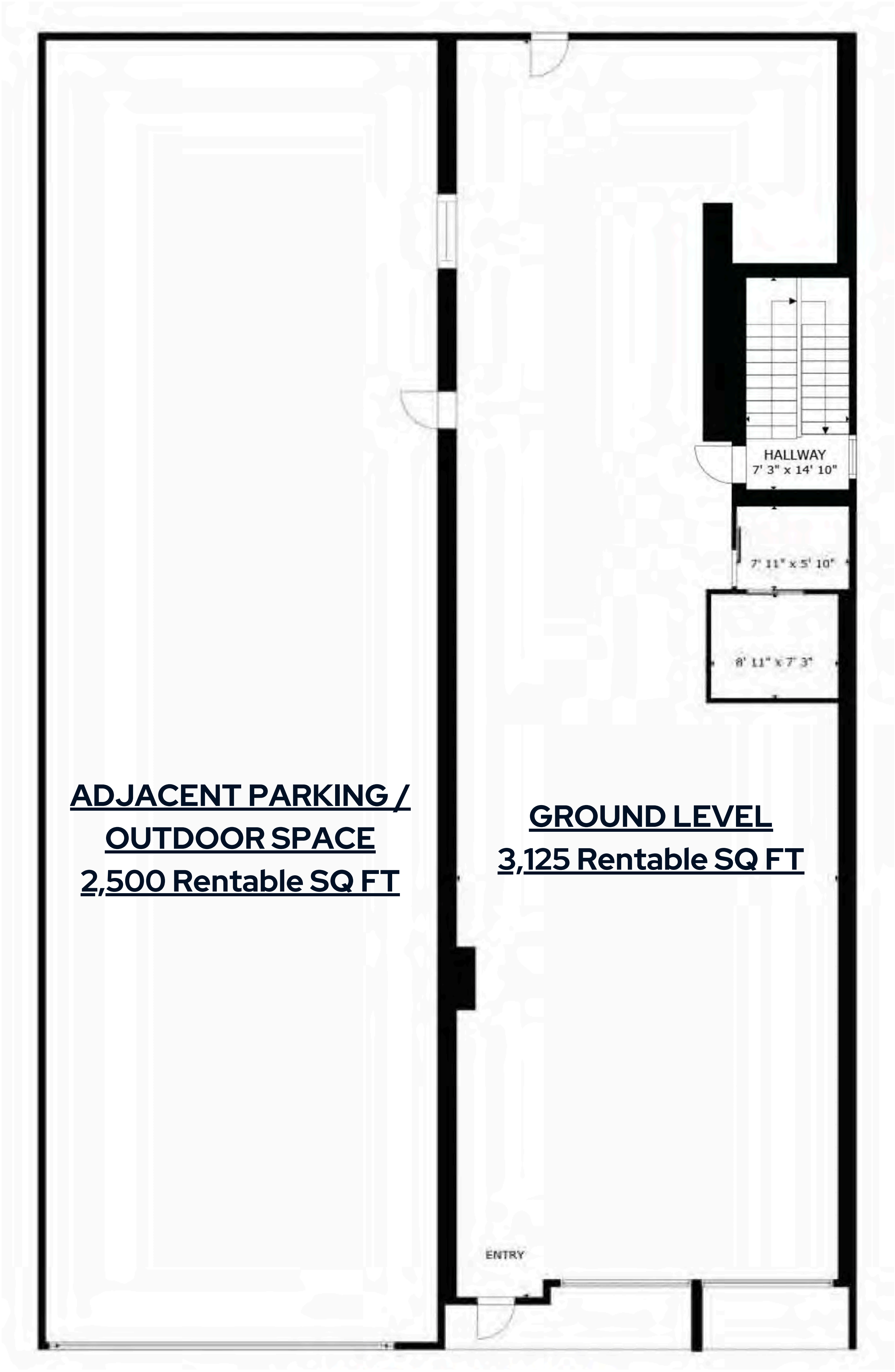
The information contained herein has been obtained from sources believed to be reliable but is not guaranteed. Strategic Realty Partners and its agents make no representations or warranties, express or implied, as to the accuracy, completeness, or suitability of the information. All interested parties are responsible for conducting their own independent investigation and verification of all data, including but not limited to square footage, zoning, land use, and financial projections. This offering is subject to errors, omissions, prior sale or lease, change in price or terms, and withdrawal without notice.



# FLOOR PLANS



178-182 EAST 124TH STREET, NEW YORK, NY 10035



## AVAILABLE FOR LEASE

**ANTHONY GAGLIANO**  
anthony@srpbrokers.com  
917-446-4400

**RUDOLPH DEMASI**  
rudy@srpbrokers.com  
914-391-1949

**PAUL MCVEIGH**  
paul@srpbrokers.com  
646-339-7890

LEARN MORE



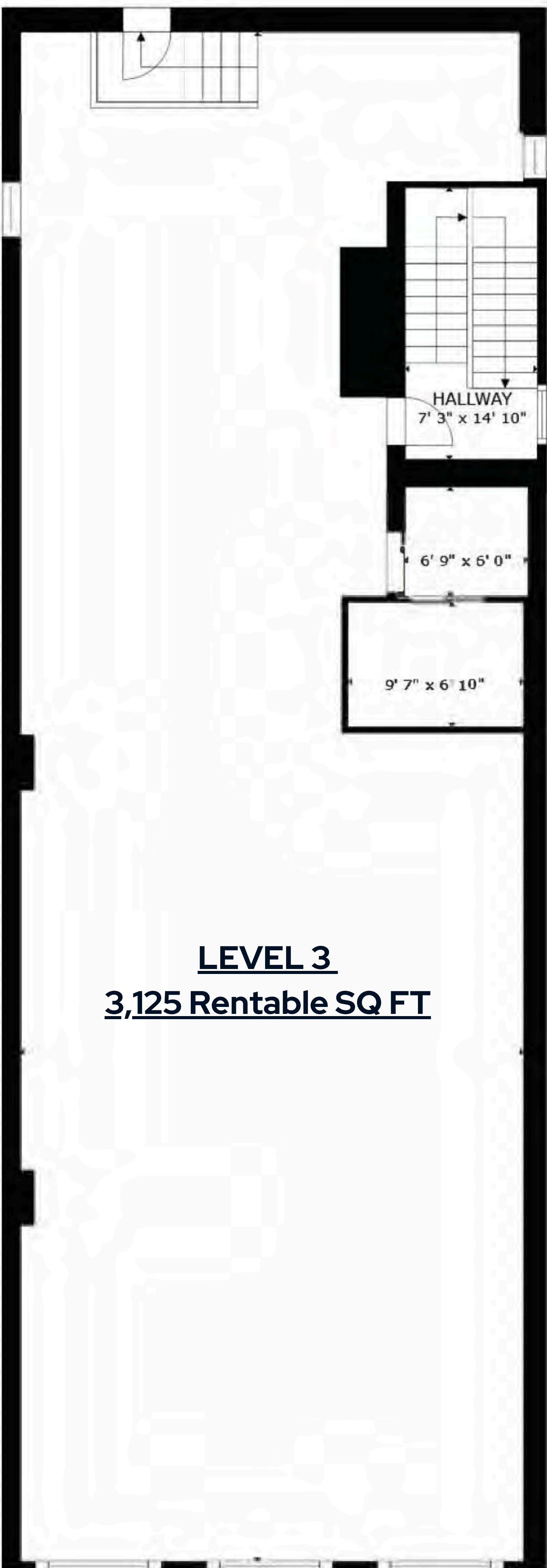
The information contained herein has been obtained from sources believed to be reliable but is not guaranteed. Strategic Realty Partners and its agents make no representations or warranties, express or implied, as to the accuracy, completeness, or suitability of the information. All interested parties are responsible for conducting their own independent investigation and verification of all data, including but not limited to square footage, zoning, land use, and financial projections. This offering is subject to errors, omissions, prior sale or lease, change in price or terms, and withdrawal without notice.



# FLOOR PLANS



178-182 EAST 124TH STREET, NEW YORK, NY 10035



## AVAILABLE FOR LEASE

**ANTHONY GAGLIANO**  
anthony@srpbrokers.com  
917-446-4400

**RUDOLPH DEMASI**  
rudu@srpbrokers.com  
914-391-1949

**PAUL MCVEIGH**  
paul@srpbrokers.com  
646-339-7890

LEARN MORE



The information contained herein has been obtained from sources believed to be reliable but is not guaranteed. Strategic Realty Partners and its agents make no representations or warranties, express or implied, as to the accuracy, completeness, or suitability of the information. All interested parties are responsible for conducting their own independent investigation and verification of all data, including but not limited to square footage, zoning, land use, and financial projections. This offering is subject to errors, omissions, prior sale or lease, change in price or terms, and withdrawal without notice.



# 178-182 EAST 124TH STREET NEW YORK, NY 10035



Total Of 15,000 SQ FT | 4-Story Elevator Building | Museum-Quality Finishes | Adjacent Parking



**Anthony Gagliano**  
anthony@srpbrokers.com  
917-446-4400



**Rudolph Demasi**  
rudy@srpbrokers.com  
914-391-1949



**Paul McVeigh**  
paul@srpbrokers.com  
646-339-7890

## STRATEGIC REALTY PARTNERS



### Visit Us:

7 W 36th Street, Suite 11R  
New York, NY 10018



### Contact:

Tel: 212-634-9199  
Email: [info@srpbrokers.com](mailto:info@srpbrokers.com)  
Fax: 917-210-4133



### Online:

[srpbrokers.com](http://srpbrokers.com)

The information contained herein has been obtained from sources believed to be reliable but is not guaranteed. Strategic Realty Partners and its agents make no representations or warranties, express or implied, as to the accuracy, completeness, or suitability of the information. All interested parties are responsible for conducting their own independent investigation and verification of all data, including but not limited to square footage, zoning, land use, and financial projections. This offering is subject to errors, omissions, prior sale or lease, change in price or terms, and withdrawal without notice.